



- ◆ Designed to meet IR 235 degree C Peak Requirement.
- ◆ Low profile SMD package.
- ◆ Pick and place compatible
- ◆ Designed to meet IEEE 802.3 Requirement.
- ◆ Optimum analog solution for 10BASE-T PCMCIA application

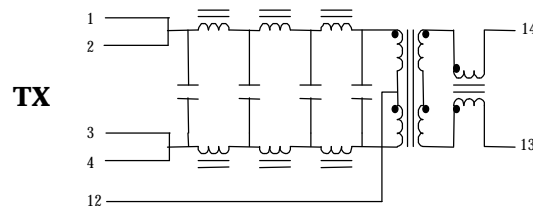
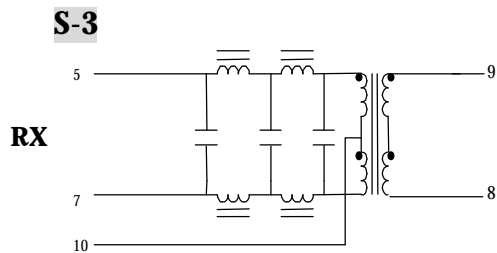
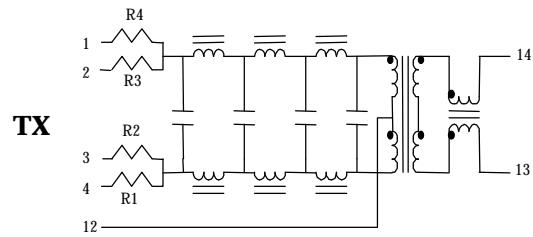
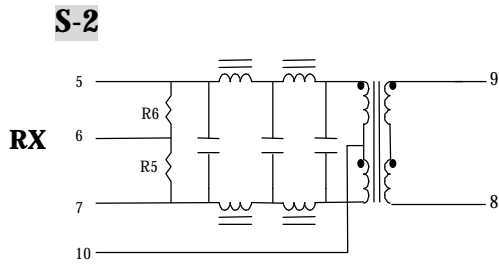
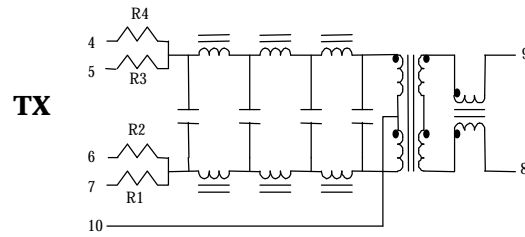
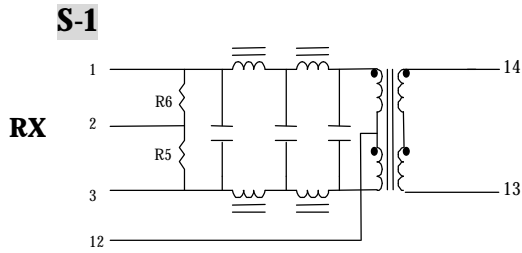
Specifications

Parameter	Condition	Min	Typ	Max	Unit
Insertion loss	@1-10MHz			-4.5	dB
Attenuation(TX/RX)	@30MHz	-30/-20			dB
	@50MHz	-35			dB
	@100MHz	-35			dB
Return loss(TX/RX)	@1-10MHz	-15.0			dB
Cross talk	@1-10MHz	-35.0			dB
CMRR	@5-10MHz	-50.0			dB
	@50MHz	-40.0			dB
	@100MHz	-30.0			dB
Isolation Voltage	1 minute	1500			Vrms

Turn ratio and resistor information

Part Number	Resistor Number			Turn ratio (Transmitter)	Schematic
	R1 R4	R2 R3	R5 R6		
14F021P	68.7 Ω	287 Ω	49.9 Ω	1 : 1	S-1
14F023P	271 Ω	68 Ω	49.9 Ω	1 : 1	S-1
14F025P	53.6 Ω	316Ω	49.9 Ω	1 : 1	S-1
14F030P	None	None	None	1 : 1	S-3
14F098P	100 Ω	20Ω	49.9 Ω	1 : 1.732	S-1
14F099P	140 Ω	26.7 Ω	49.9 Ω	1 : 1.414	S-1
Part Number	Resistor Number			Turn ratio (Transmitter)	Schematic
	R1 R3	R2 R4	R5 R6		
14F027P	140 Ω	26.7 Ω	49.9 Ω	1 : 1.414	S-2
14F031P	133 Ω	20 Ω	49.9 Ω	1 : 1.414	S-2

Schematic :



Dimension :

